



**ELBLANDKLINIKUM
RIESA**

GANZ NAH BEI MIR

REGISTRATION & PARTICIPATION FEE

Participation fee: € 300.00 per person

For registration and inquiries, please contact:

Mandy Richter

E-mail: Mandy.Richter2@elblandkliniken.de

VENUE

ELBLANDKLINIKUM Riesa

Conference room level 7 and central endoscopy

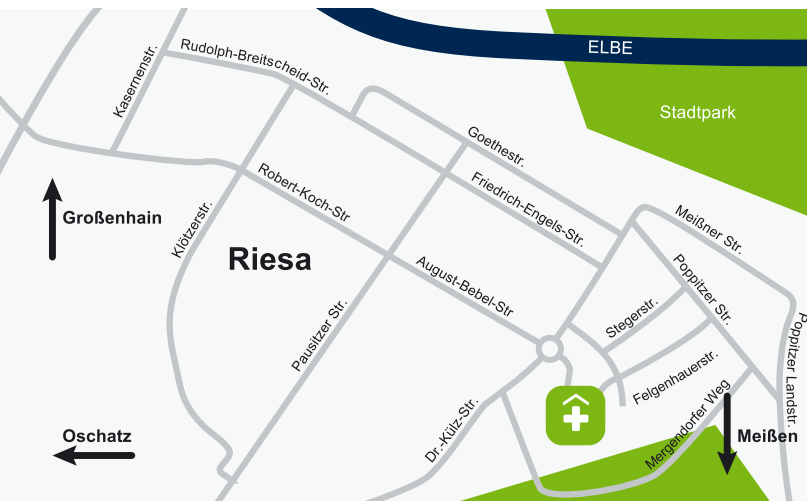
Weinbergstraße 8

01589 Riesa | Germany

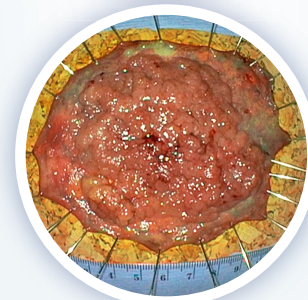
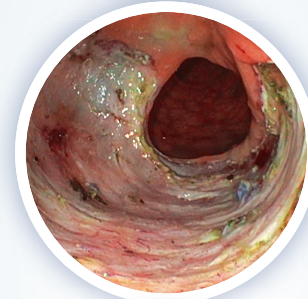
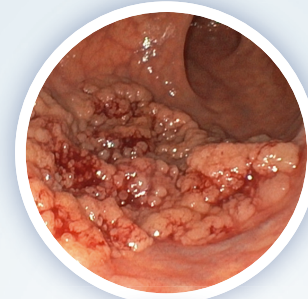
ACKNOWLEDGEMENT

Continuing education points have been applied
for at the SLÄK.

ROUTE



WWW.ELBLANDKLINIKEN.DE



WORKSHOP ENDOSCOPIC SUBMUCOSAL DISSECTION

04 – 05 July 2025

Elblandklinikum Riesa – Germany

Dear colleagues,

I am pleased to invite you to our **third** Endoscopic Submucosal Dissection (ESD) workshop. Though a complex procedure, ESD is gaining increasing recognition in Europe. This time, we are expanding our focus to include the detection and diagnosis of early neoplasia in the upper gastrointestinal tract, alongside our established training in colorectal ESD.

Accurate detection and treatment of early neoplastic lesions are crucial for achieving optimal patient outcomes. While en bloc resection with ESD ensures complete removal and precise pathological assessment, performing ESD in both the upper and lower GI tract presents distinct challenges. Success in this technique requires expertise, proper equipment, and extensive hands-on training.

This workshop will cover essential topics, including diagnostic endoscopy, colorectal ESD indications, instrumentation, and technical aspects, complemented by live demonstrations and hands-on training with swine models in small groups.

Our hospital is conveniently located near Dresden, a city renowned for its cultural heritage, and Meissen, home to a historic castle and the world-famous porcelain manufacturer. We encourage participants to explore these cultural highlights in the evenings.



WORKSHOP PROGRAM

DAY 1

08:00	Introduction Dr. Petr Sergeev, Elblandklinikum Riesa
08:10 – 08:30	Challenges in Detecting Early Neoplasia in the Upper GI Tract Dr. med. Hendrik Strebel, Elblandklinikum Meissen
08:30 – 15:00	Live Demonstrations & Case Discussions Dr. Petr Sergeev, Dr. Igor Ehrmann, Dr. med. Hendrik Strebel
15:00 – 15:20	Indications for ESD in Colorectal Lesions Dr. Petr Sergeev
15:20 – 15:40	ESD-Related Devices Dr. Mariia Nedoshitova, Elblandklinikum Riesa

DAY 2

09:00 – 09:30	Basics of Colorectal ESD Technique Dr. Igor Ehrmann, Elblandklinikum Riesa
09:30 – 10:00	Pathological Assessment of ESD Specimens Dr. med. Steffen Kellermann, Gemeinschaftspraxis für Pathologie, Dresden
10:00 – 15:00	ESD Hands-on Training with Swine Models

To ensure a high level of hands-on experience, participation is limited to three trainees per station.

We look forward to welcoming you to Riesa for an engaging and practical learning experience!