



ELBLANDKLINIKUM  
RIESA

GANZ NAH BEI MIR

## REGISTRATION & PARTICIPATION FEE

**Participation fee:** € 300.00 per person

**Please register per e-mail** at the office of the Clinic for Internal Medicine:

Mandy Richter

E-mail: Mandy.Richter2@elblandkliniken.de

## VENUE

ELBLANDKLINIKUM Riesa

Conference room level 7 and central endoscopy

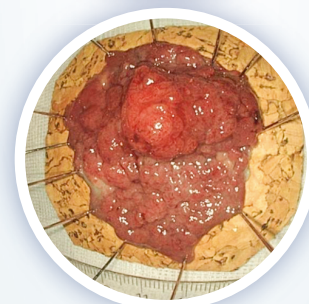
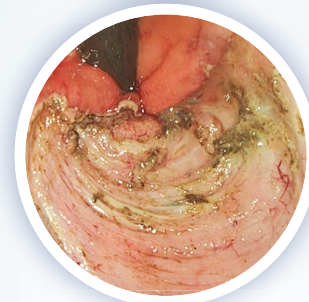
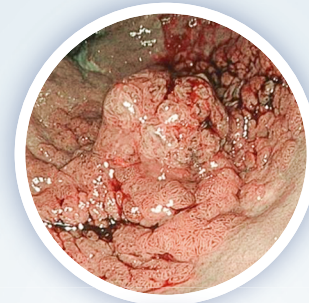
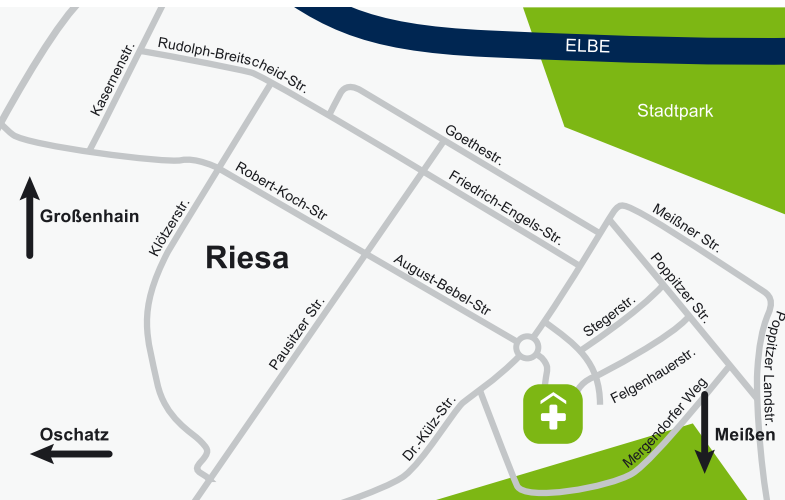
Weinbergstraße 8

01589 Riesa | Germany

## ACKNOWLEDGEMENT

Continuing education points have been applied for at the SLÄK.

## ROUTE



## WORKSHOP ENDOSCOPIC SUBMUCOSAL DISSECTION

17 – 18 January 2025  
Elblandklinikum Riesa

[WWW.ELBLANDKLINIKEN.DE](http://WWW.ELBLANDKLINIKEN.DE)

Dear Colleagues,

I am pleased to invite you to our second workshop on Endoscopic Submucosal Dissection (ESD), focusing on the lower gastrointestinal tract.

Treating neoplastic lesions in this area presents significant challenges, requiring careful resection to minimize recurrence and ensure accurate pathological assessment. En bloc resection is preferred to achieve these goals. ESD is effective for removing lesions of any size, even in difficult locations and with scar tissue. However, it is time-consuming, requires highly trained staff, and carries a higher risk of complications compared to EMR.

ESD, initially developed in Japan for early gastric cancer, was later adapted for esophageal and colorectal lesions. In western countries, ESD is still uncommon due to a shortage of trained specialists. In East Asia, trainees begin ESD in the stomach, but the low prevalence of gastric cancer and lack of screening in Europe make this impractical for us. Thus, we start with the lower gastrointestinal tract, addressing complex lesions with thin submucosa and frequent fibrosis.

On the first day, we will discuss ESD indications for the lower gastrointestinal tract and demonstrate related devices. You will observe complete ESD procedures from start to finish. The second day will cover basic ESD techniques and pathological assessment, followed by practical training using swine bowel models. Participation is limited to ensure hands-on experience, with only four trainees per station.

Our hospital is conveniently located near Dresden, famous for its art galleries and opera theater, and close to Meissen, known for its beautiful castle and porcelain manufacturer. Enjoy cultural programs in the evenings during your visit.

## PROGRAM OF WORKSHOPS



### 17 January 2025

- |                     |  |
|---------------------|--|
| <b>8:00</b>         | <b>Introduction</b><br>Dr. Petr Sergeev,<br>Elblandklinikum Riesa  |
| <b>8:10 – 8:30</b>  | <b>Colonic ESD und rectal ESD –<br/>for which lesion?</b><br>Dr. Petr Sergeev  |
| <b>8:30 – 9:00</b>  | <b>What do I use for rectal and<br/>colonic ESD?</b><br><b>Features of tools and devices</b><br>Mariia Nedoshitova,<br>Elblandklinikum Riesa |
| <b>9:00 – 14:00</b> | <b>Life demonstrations,<br/>discussion of cases</b><br>Dr. Petr Sergeev,<br>Dr. Igor Ermolaev  |

### 18 January 2025

- |                      |  |
|----------------------|--|
| <b>9:00 – 9:20</b>   | <b>Basics of the rectal ESD.<br/>How can I perform it?</b><br>Dr. Igor Ermolaev,<br>Elblandklinikum Riesa  |
| <b>9:30 – 9:50</b>   | <b>Pathological assessment of ESD<br/>resections specimens.<br/>What is important for the<br/>pathologist?</b><br>Dr. med. Steffen Kellermann,<br>Gemeinschaftspraxis für<br>Pathologie, Dresden |
| <b>10:00 – 15:00</b> | <b>ESD training on the swine<br/>models</b>  |